



TYPICAL STOP SIGN



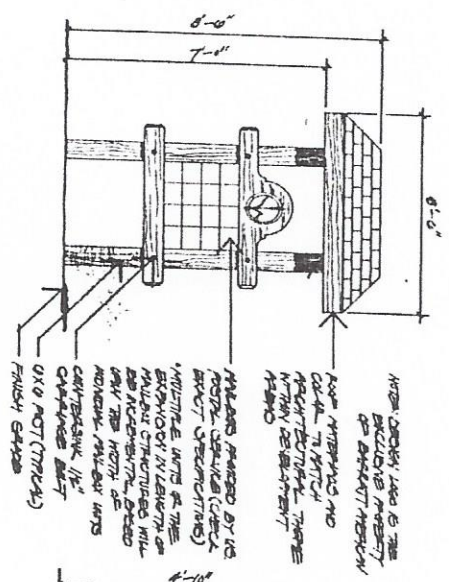
TYPICAL STOP SIGN/STREET IDENTIFICATION SIGN



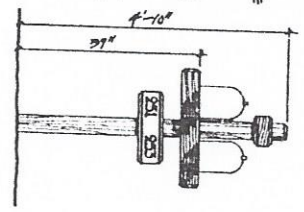
TYPICAL STREET IDENTIFICATION SIGN

SIGNAGE
 DESIGNED BY SERRAS & S
 250 EAST 7TH AVE. SUITE 10
 CHICAGO, IL 60602

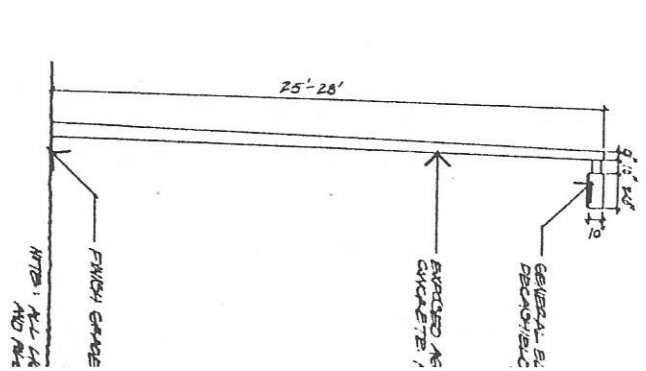
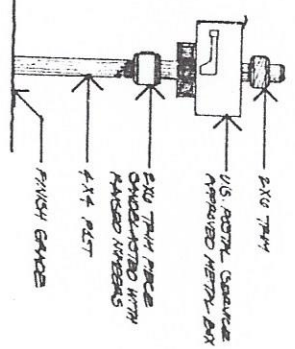
THESE SIGNS WILL BE IDENTIFIED
 BY A CIVIL ENGINEER



TYPICAL SINGLE FAMILY ATTACHED RESIDENCE



TYPICAL SINGLE FAMILY DETACHED RESIDENCE



LIGHTING

DESIGNED BY SERRAS & S
 250 EAST 7TH AVE. SUITE 10
 CHICAGO, IL 60602

CREEKSIDE VILLAGE
 BARRATT SOUTHERN CALIFORNIA, INC. - CITY OF ONTARIO

MAILBOX

DESIGNED BY DNL CONSTRUCTION
 250 EAST 7TH AVE. SUITE 10
 CHICAGO, IL 60602

1'-0" = 25'-0" R.O. STANOVIA